



## Motorhome heater Combi D

### Product info

for new diesel version  
of motor home heater  
with integrated  
hot water container

May 2008 edition



Comfort on the move



More information <https://www.caravansplus.com.au>

# Combi D

Motorhome heater with integrated hot water container

Combi D is a compact, efficient and reliable heater with integrated hot water container. It is designed for use in motorhomes and caravans.

The unit can heat the living area and the water at the same time in **winter operation**, or just the water in **summer operation**.

## Combi D

- Combi D 6 = up to 6 kW heating operation with diesel

## The advantages of the Combi D concept

- Reliable product quality due to superior Eberspächer diesel burner technology
- Protected installation in vehicle interior, extremely efficient
- Innovative exhaust system with safety concept for interior installation
- Side wall cowl
- Quiet heating comfort due to microprocessor control
- Tried and tested Truma operating concept

## Combi D

Diesel



## New technical features

- Less noise emission due to optimised air flow
- Installation compartment temperature reduced by 25%
- Better warm air distribution
- Microprocessor control for intelligent temperature regulation
- Fault memory helps to improve service

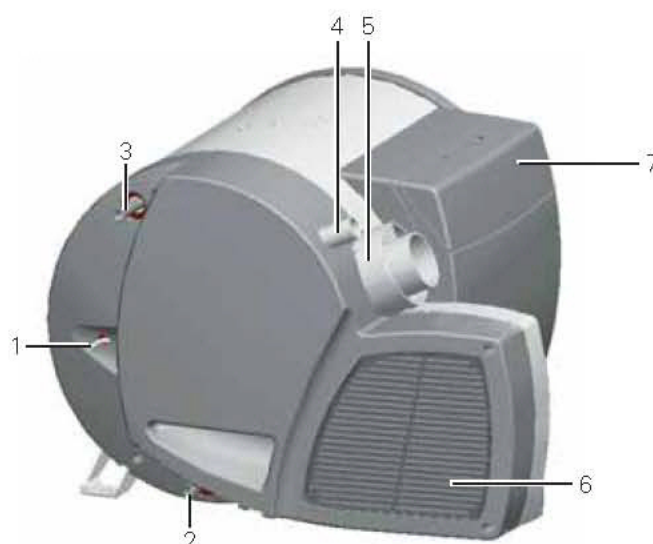
Combi D

approx. 20 min



- Easier to install, since:
  - All connections (diesel, water and exhaust) are easy to access from the front
  - The electrical system is accessible from above
  - All warm air connections are easy to access from the rear.

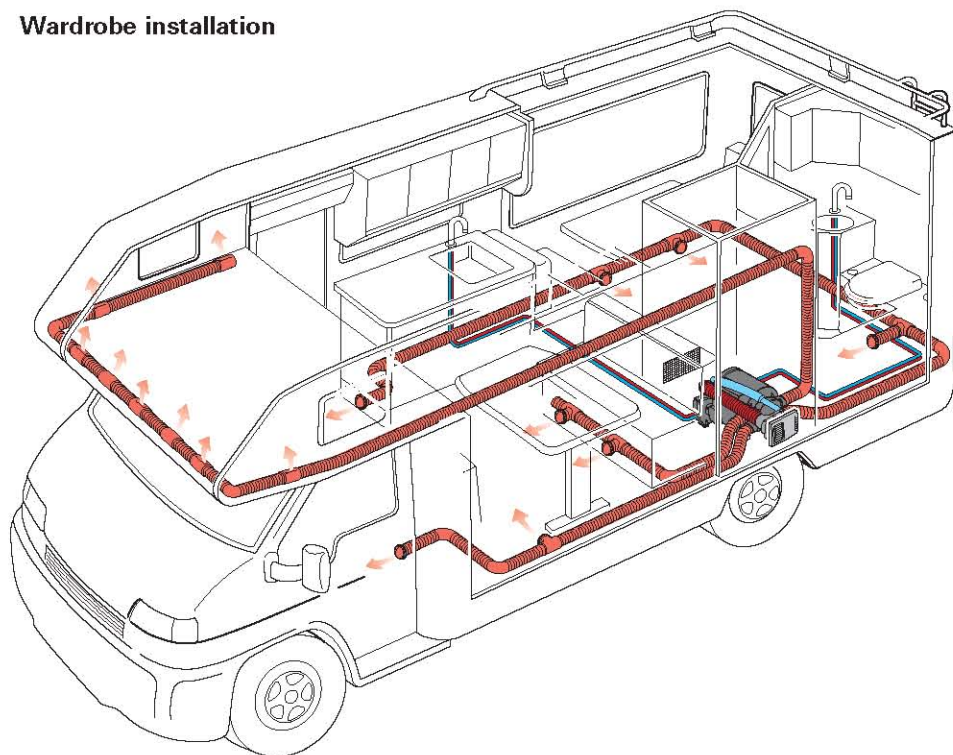
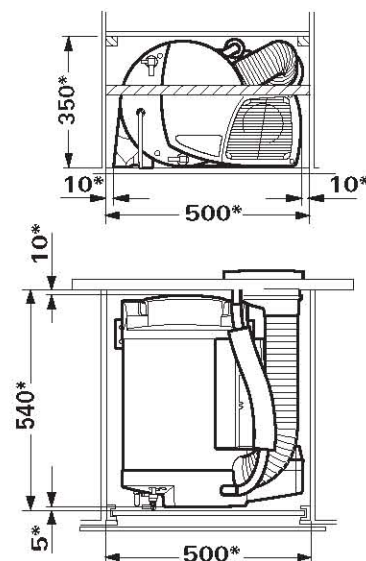
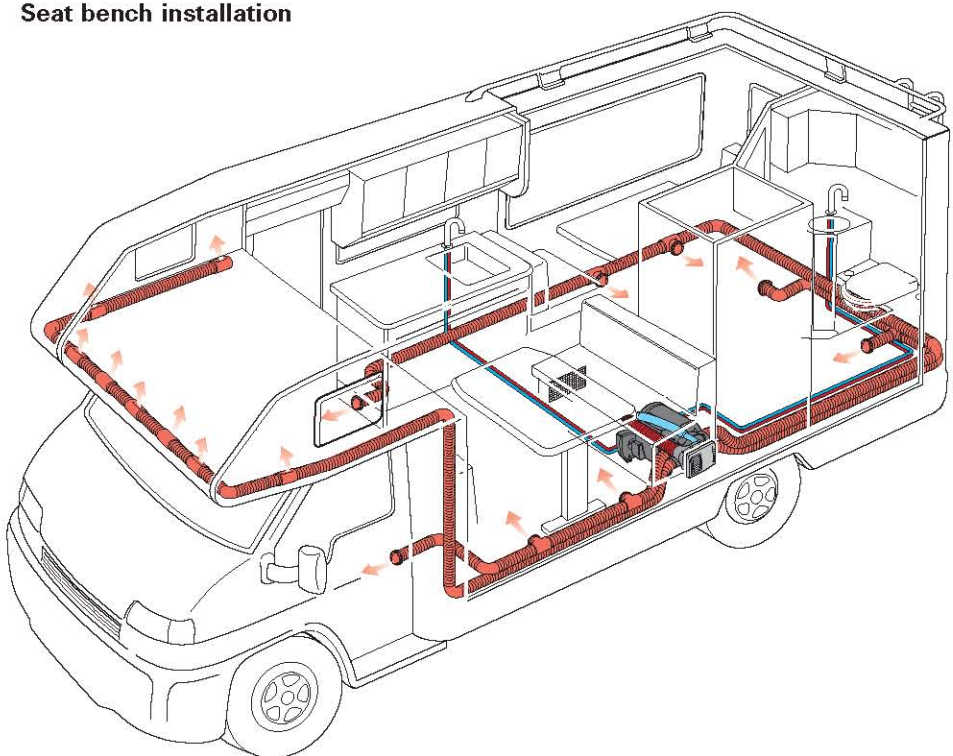
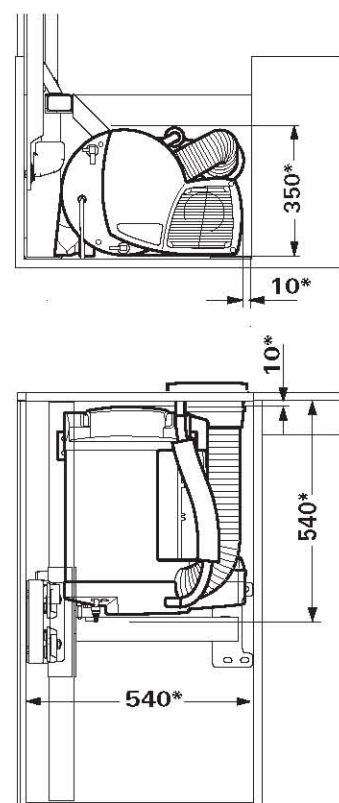
Combi D



- 1 Diesel connection
- 2 Cold water connection
- 3 Hot water connection
- 4 Combustion air inlet
- 5 Flue system
- 6 Air circulation motor
- 7 Microprocessor-controlled electronics



## Combi D installation examples

**Wardrobe installation****Minimum installation dimensions****Seat bench installation****Minimum installation dimensions**

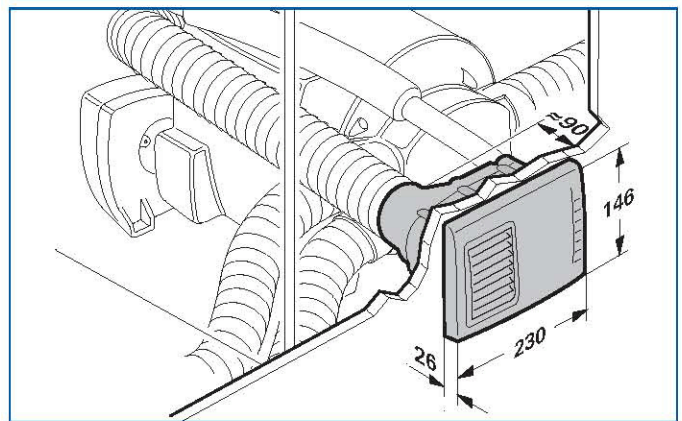
\* Minimum installation dimensions - additional space must be provided for diesel and water connections depending on the installation situation. All dimensions in mm.

## Installation Instructions

- The unit and its exhaust duct must always be installed so that they are easy to access at all times for service work (e.g. diesel connection, water connection and electronic via a service flap, furniture doors etc.) and are easy to remove and install.
- The distance between the unit and the surrounding furniture or vehicle components must be at least 10 mm at the sides and from the hot air distribution, and 5 mm from the fuel connection.
- The motor home heater must be partitioned off from other bulky items in the bed box and the seat bench to prevent it from being damaged!
- An air supply cross-section of at least 150 cm<sup>2</sup> from the interior must be available for the heater.
- The bathroom or the rear storage space must be provided with warm air via a branch using a T-piece or a Y-piece.
- In order to provide uniform heating throughout the vehicle, the heater must be installed in a location that is as central as possible inside the vehicle (e.g. in a wardrobe, beneath the seat group, beneath the kitchen or in storage compartments) with an adequate height, so that the air distribution ducts can be routed with approximately equal lengths.
- Short pipelines have an advantageous effect on the heating time.
- The best installation site for the room temperature sensor is above the door.
- The main power supply of the unit is protected by a 20 A (slow-acting) fuse.

**Attention:** When the heater unit is installed it must be ensured that it is accessible for regular checking and maintenance.

### Wall cowl



## Technical Data

found by Truma Test conditions

### Fuel

#### Water capacity

Heating time from approx. 15° C to approx. 60° C

#### Water pressure

Rated thermal output (automatic output stages)

#### Fuel consumption

during normal operation with moderate heat output (1000 W)

Air delivery volume (freely blowing without warm air duct)

Current input with 12 V (heater + boiler)

Boiler operation

Standby current

FrostControl heating element (optional)

Weight (without water, with peripherals)

Diesel in acc. with EN 590

10 litres

Boiler approx. 20 minutes (measured according to EN 15033)

max. 2.8 bar

2000 W / 4000 W / 6000 W

220 - 630 ml/hr.

110 ml/h

max. 287 m<sup>3</sup>/hr.

1.8 A - 7 A

max. 1.8 A

approx. 0.001 A

max. 0.4 A

17.2 kg



CDW

34500-01	34500-51*
34500-02	34500-52*
34500-03	34500-53*
34500-04	34500-54*

34020-45200



Pipe set **CDW** complete with sound mufflers for combustion air and exhaust, incl. lock washer and insulating duct

Pipe set CDW 54 cm

Pipe set CDW 70 cm

Pipe set CDW 100 cm

Pipe set CDW 150 cm

\* Bulk pack without insulating duct

Lock washer (spare)

if pipe set requires shortening (lock washer tool required for installation)